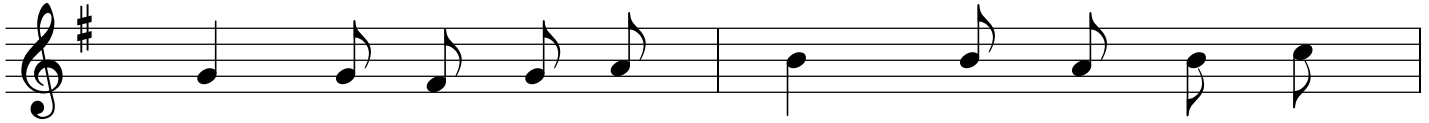


# Nebo i Zem'la - Chant

"Similar to Heaven and Earth"

St. Michael's, Binghamton, NY

Traditional Plain Chant

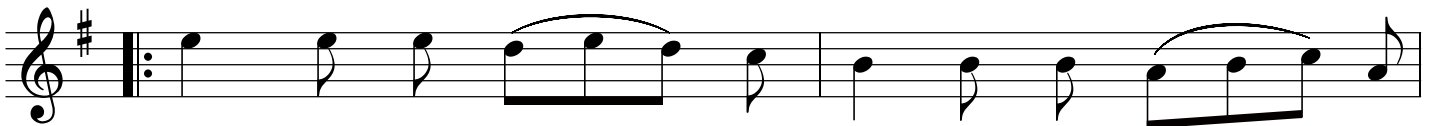


1a Ne - bo i zem - l'a, Ne - bo i zem - l'a,  
1b An - he - ly l'u - di, An - he - ly l'u - di,  
2a Vo Vif - le - je - mi, Vo Vif - le - je - mi,  
2b Cis - ta - ja D'i - va, Cis - ta - ja D'i - va,

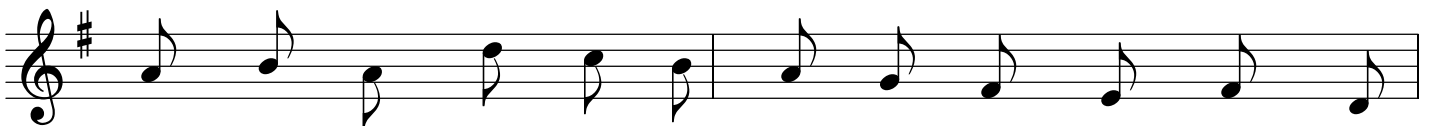


1a Ny - ni\_\_\_\_\_ tor - ze - stvu\_\_\_\_\_ - jut'.  
1b Ve - se\_\_\_\_\_ - lo *prazd* - nu\_\_\_\_\_ - jut'.  
2a Ve - se\_\_\_\_\_ - la no - vi\_\_\_\_\_ - na.  
2b Po - ro\_\_\_\_\_ - di - la Sy\_\_\_\_\_ - na.

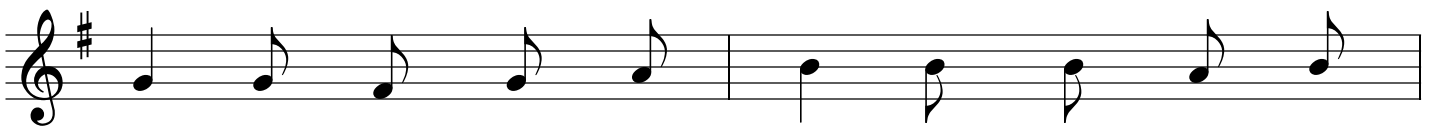
## Refrain



Chris - tos ro - dil\_\_\_\_\_ - sja, Boh vo - plo - til\_\_\_\_\_ - sja,



An - he - ly spi - va - jut', Ca - ri - je vi - ta - jut',



Pok - lon ot - da - jut', Pas - ty - ri i - hra -



jut', Cu - do, cu - do po - vi - da\_\_\_\_\_ - jut'.

**Sing 1a and 1b then sing refrain 2 times.  
Sing 2a and 2b then sing refrain 2 times.**